

"There are lots of integration issues when it comes to CardioMEMS with the EMR" - Physician Interviews



"Currently, the patients don't get to see their own data through any portal" - Physician Interviews



"CardioMEMS integration is one of few interventions to prevent hospitalizations" - Physician Interviews



"We need to make data-driven solutions integrated with patients' wellbeing" - Physician Interviews



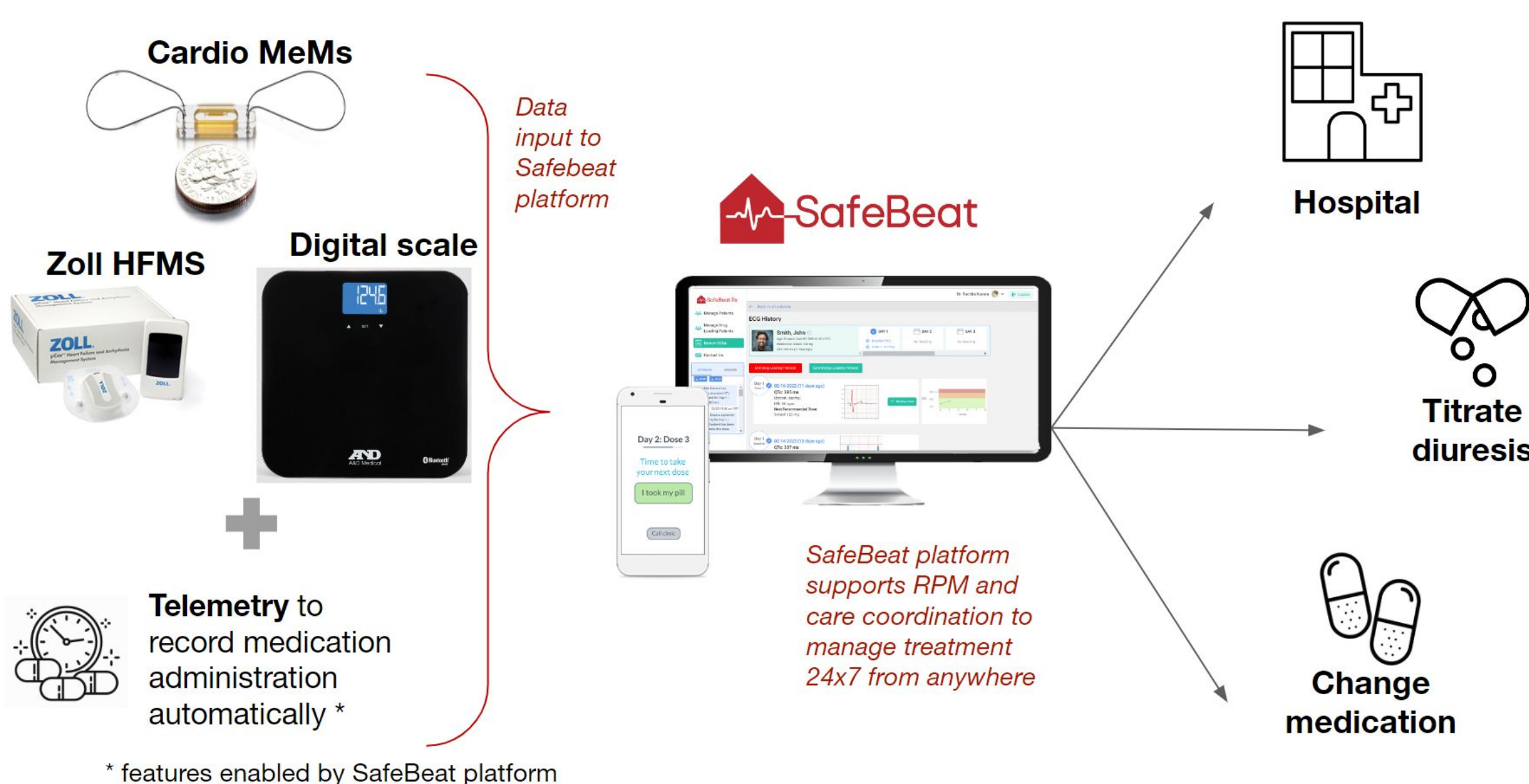
Automating Heart Failure Care at Home



Yelin Kim, Tarjini Mehta, Sheila Okoroanyanwu, Maxine Sy Chu

THE TECHNOLOGY

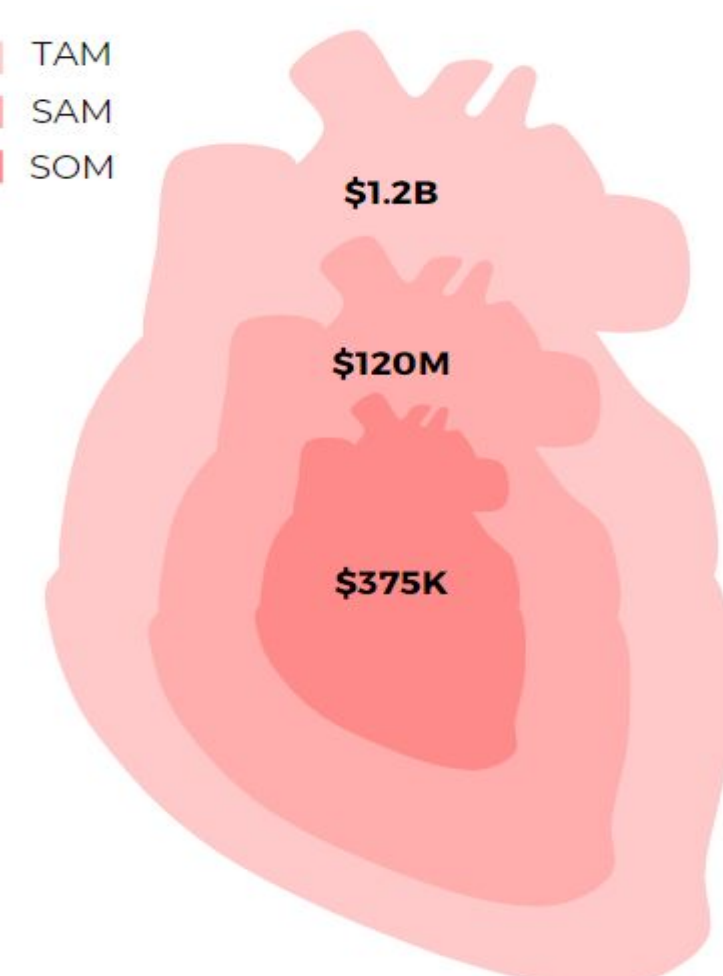
SafeBeat's platform leverages machine learning to analyze a heart failure patient's clinical data and produce a treatment recommendation.



MARKET ANALYSIS

Hospitals lose **\$3800** per readmission

TAM: Global heart failure market
 SAM: Market eligible for CardioMEMS implantation in the US
 SOM: Market eligible for CardioMEMS implantation in California

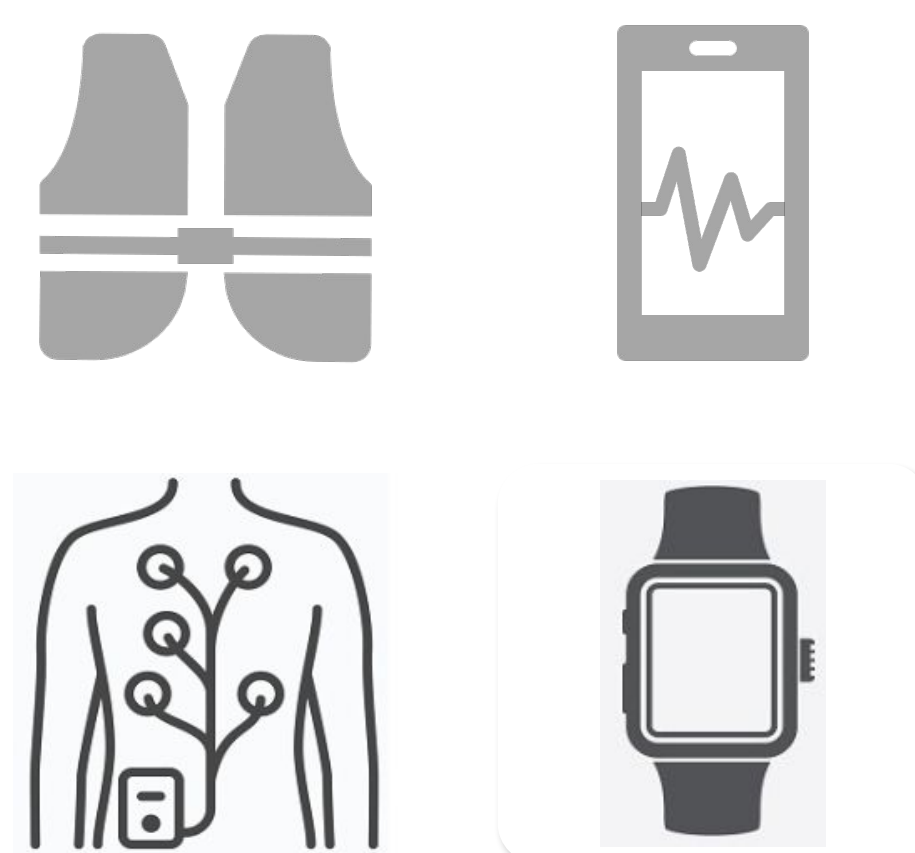


COMPETITOR ANALYSIS

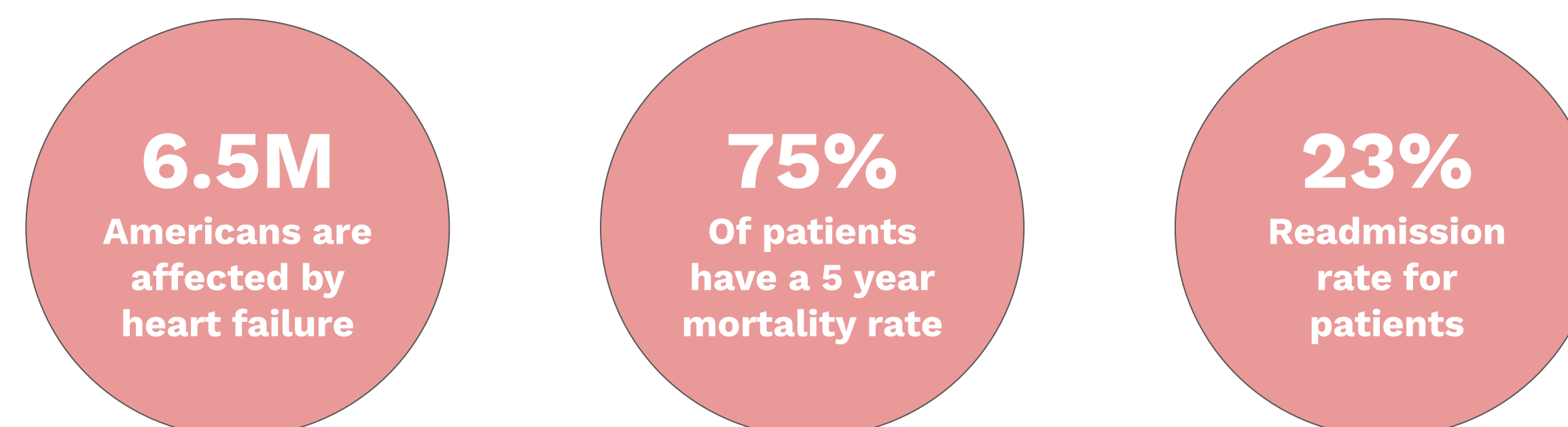
	Apps Currently in the Heart Failure Care Landscape				
	SafeBeat Rx	HF Helper	HeartMapp	HF Storylines	PatientConnect
Self-Managed HF/Wellness Tracking	●	●	●	●	●
Integrates with Wearables and Implantables	●		●	●	●
Communication with Care Team	●	●		●	●
Treatment Progress Reports	●		●		
Guided Treatment Dosing	●				
ML-Powered Automation	●				

CURRENT DISEASE STATE

Clinical Issue: Provide More Accessible Treatment to Heart Failure Patients



Currently, heart failure patients represent some of the **highest costs** to healthcare systems, due to penalties incurred by the **30 day Medicare readmissions**



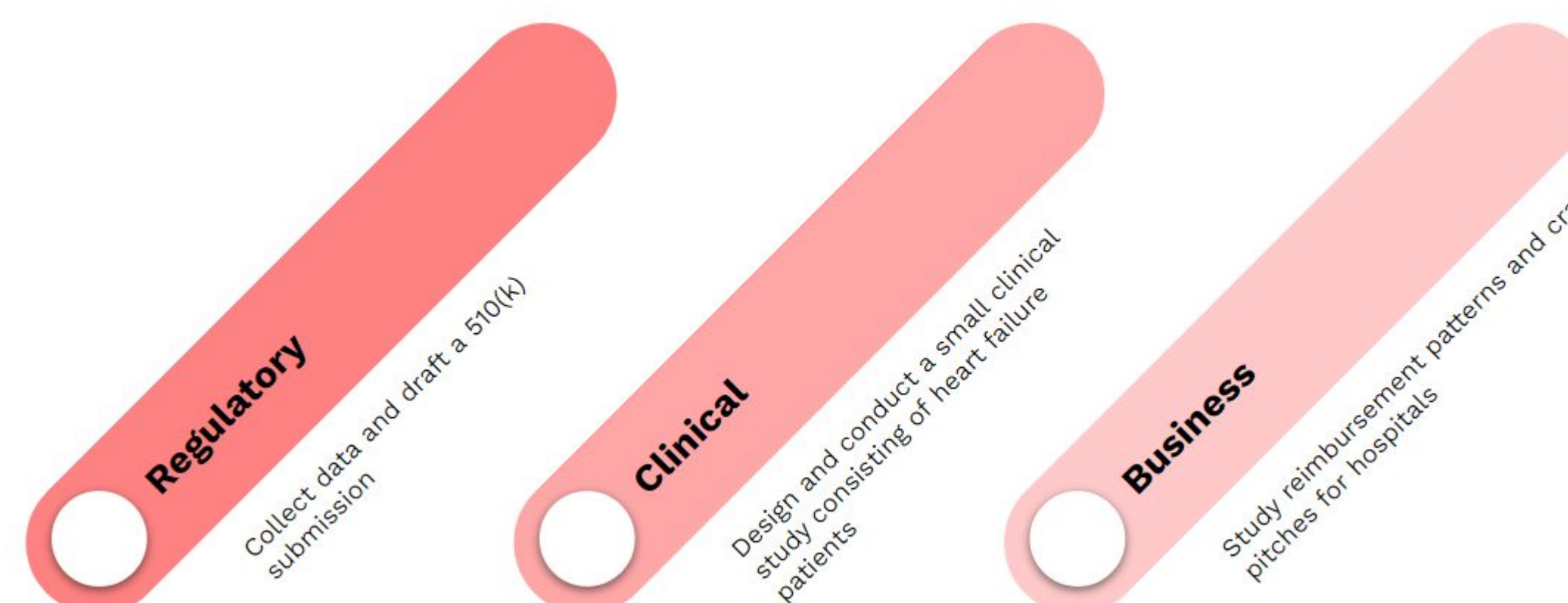
PUSH-TO-MARKET CONSIDERATIONS

SafeBeat Rx as a Companion Diagnostic

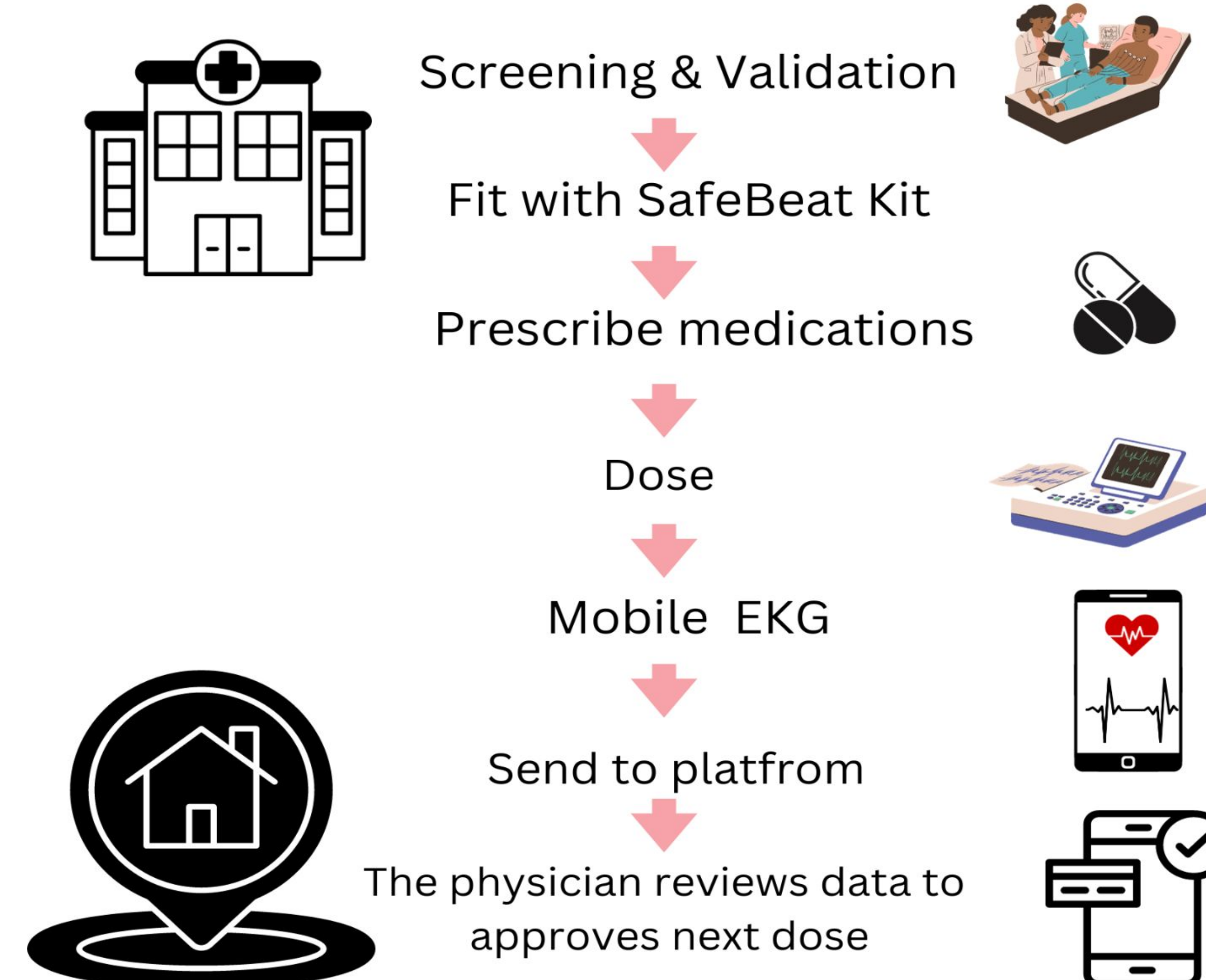
Looking into Companion Diagnostics (CDx) is a regulatory strategy that SafeBeat can use in order to gain access to the market. CDx need to get approved either with an already established drug (e.g. Sotalolol, Dofetilide) or during the codevelopment of a drug. This could be a viable regulatory pathway for a platform that integrates with existing therapeutic interventions for heart failure.



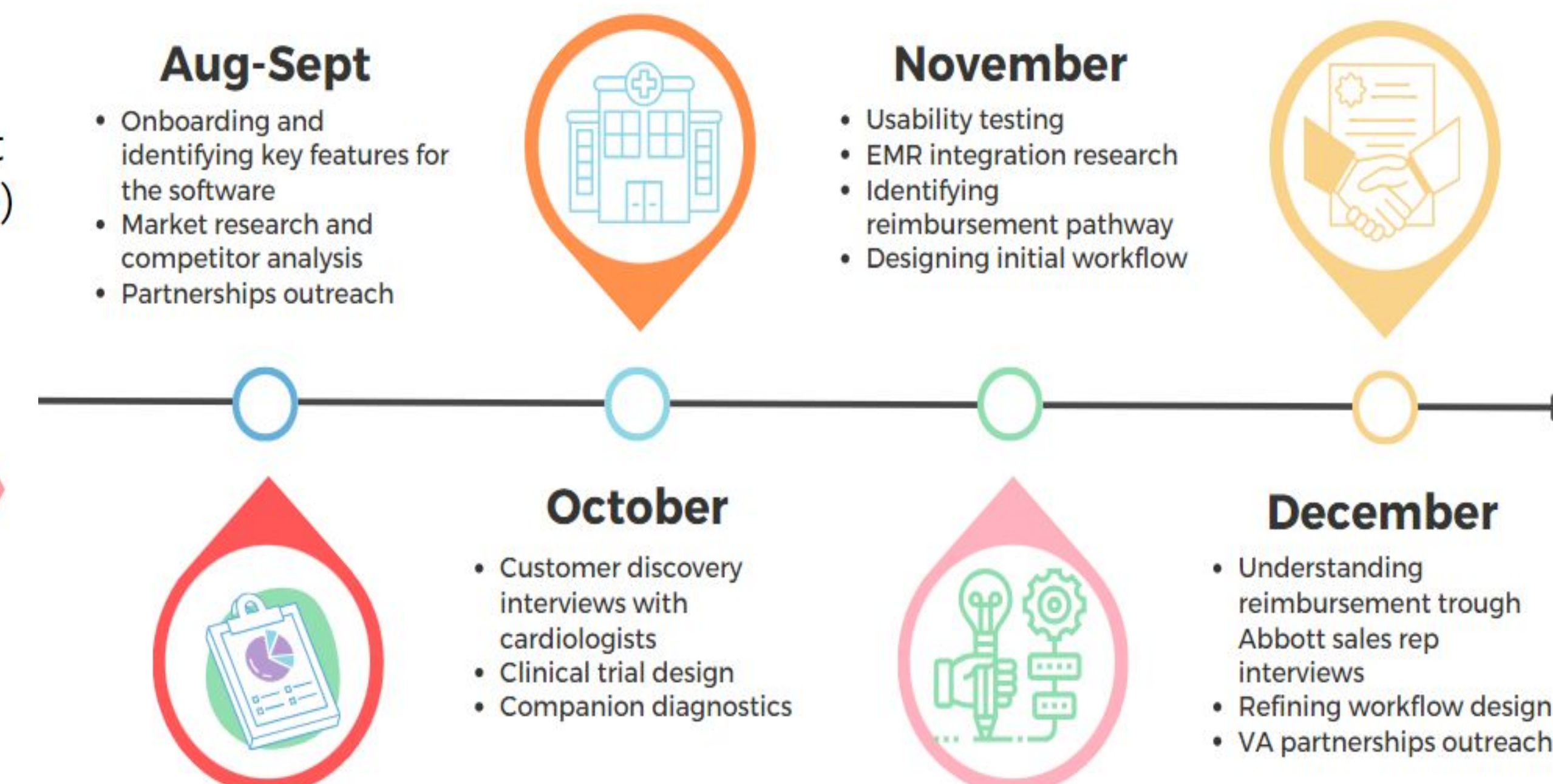
FUTURE CONSIDERATIONS



CLINICAL TRIALS PROGRESS



OUR PROGRESS



ACKNOWLEDGMENTS

Sponsor team:
 Dr. Kunj Patel
 Dr. Rachita Navara
 Walker McHugh
 Rania DeLeon