

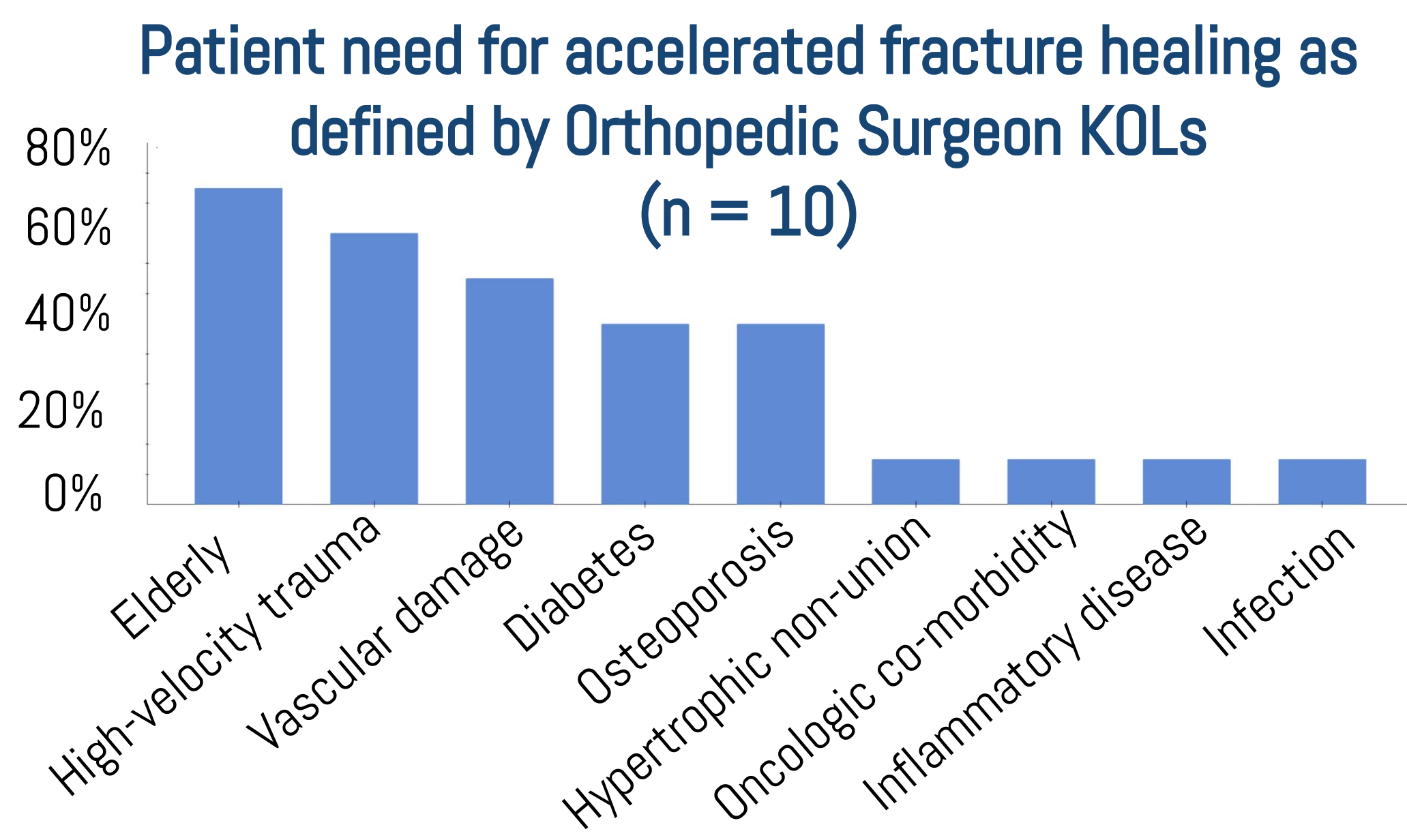
NEUROCURA



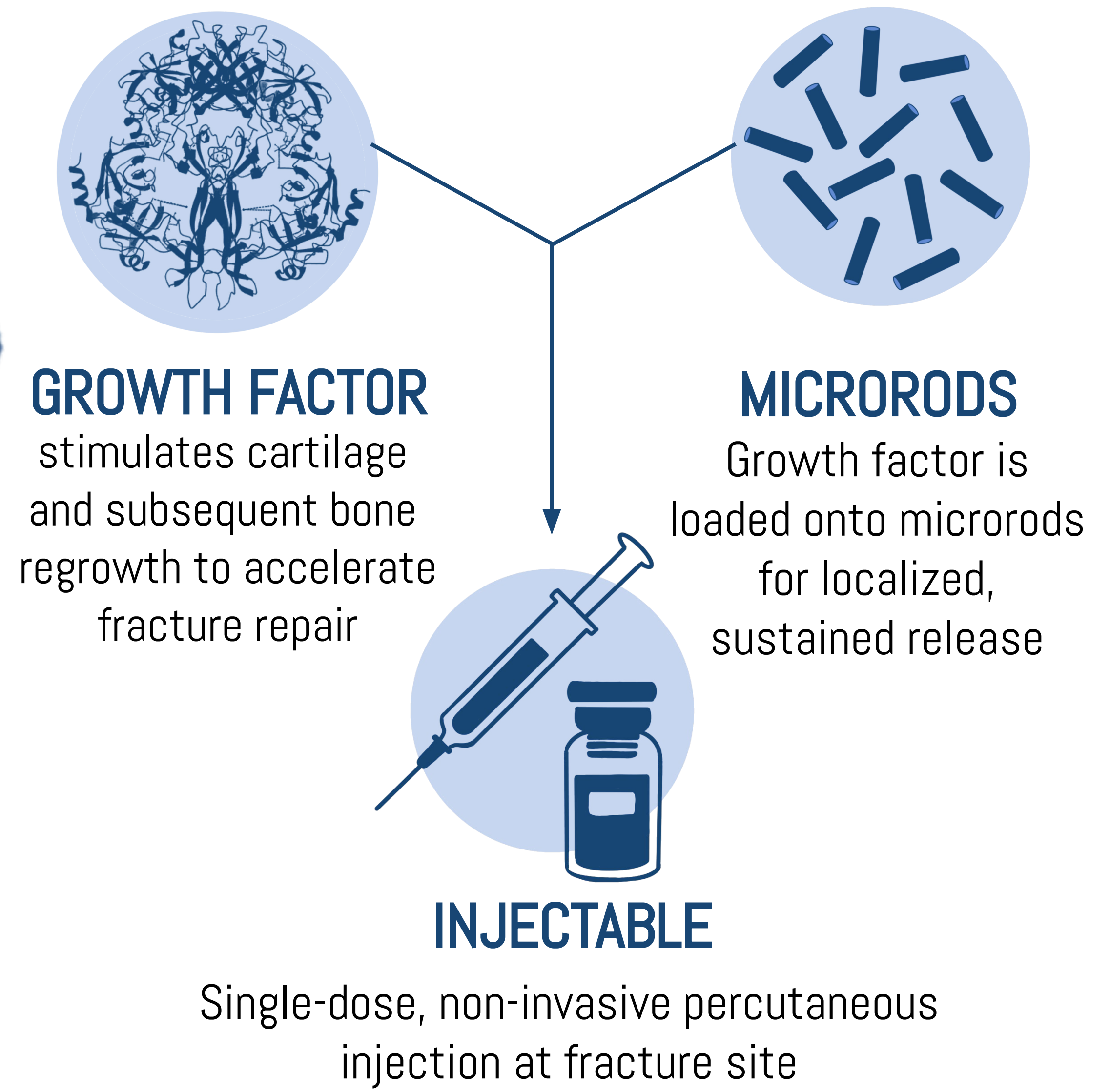
Non-invasive therapeutic to accelerate fracture healing

CLINICAL NEED

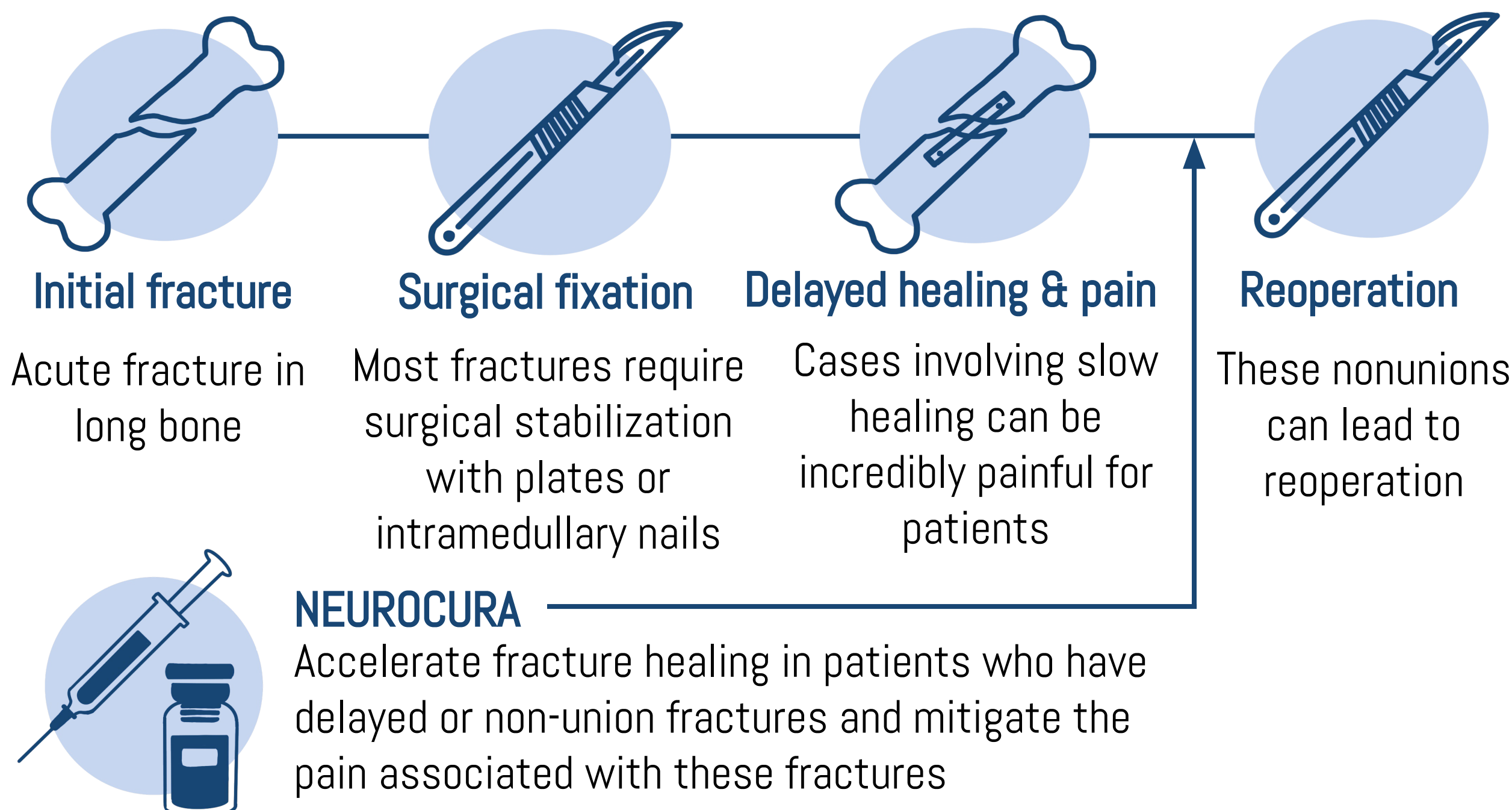
- 15M** fractures per year in the United States
- 10-15%** are **delayed** or **nonunion** fractures
- Up to 50%** are delayed or nonunion in patients with vascular damage or other comorbidities



OUR THERAPEUTIC

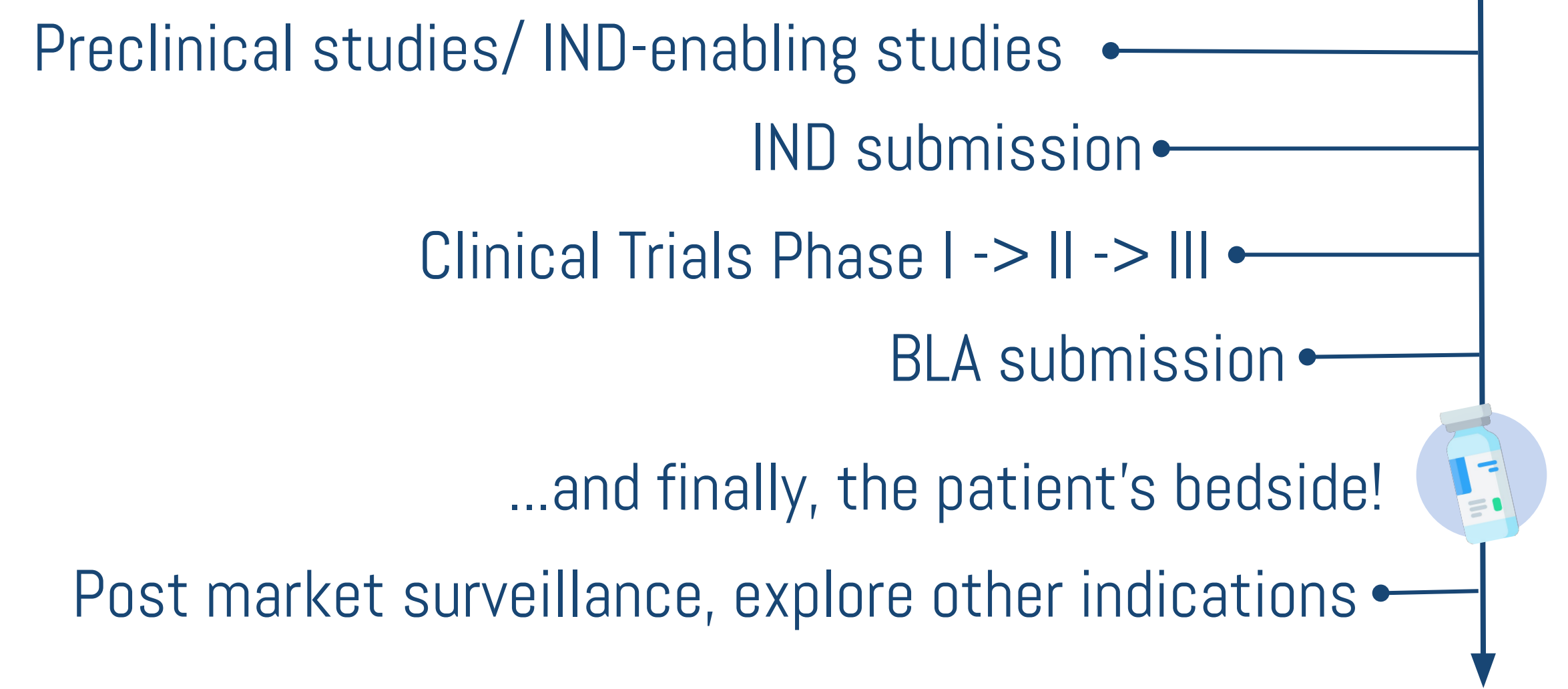


PATIENT JOURNEY



REGULATORY PATHWAY

Innovation is a device + drug combination product. Primary mechanism of action is through the drug.



COMPETITIVE ANALYSIS

PRODUCT	NON- INVASIVE	SINGLE DOSE	COST EFFECTIVE
NEUROCURA	●	●	●
External Bone Stimulators	●	○	○
Parathyroid hormone	●	◐	○
Bone morphogenic proteins	○	●	○

OUR TEAM & KEY PARTNERSHIPS

MTM STUDENT TEAM

Arisa Chuklin
Bryce Riffenburgh-Kirby
Claire Bogosian
Naveen Dhawan

MTM SPONSORS

Chelsea Bahney, PhD
Tejal Desai, PhD
Nafisa Elghazali, BS
Chengbiao Wu, PhD

KEY PARTNER



OPPORTUNITY & MARKET

